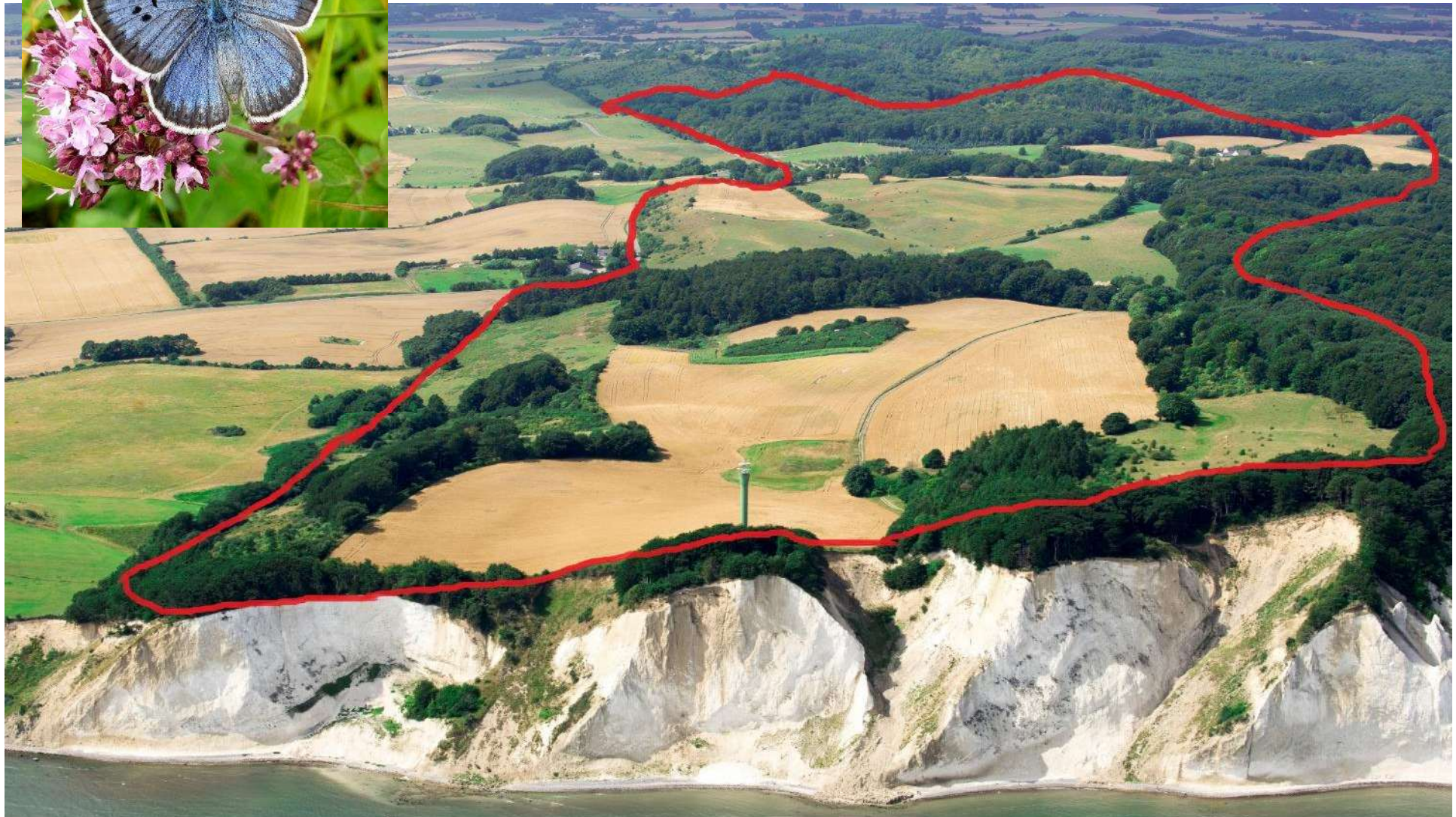


Oplæg om LIFE ORCHIDS
- Miljørådsmøde den 8. maj 2023
v. Carsten Horup



LIFE ORCHIDS – det næste vigtige skridt for biodiversiteten i Vordingborg Kommune!

Projektperiode:

1. September 2023 – 31. december 2028

Lead-partner:

Vordingborg Kommune

Partnere:

- Klintholm Gods
- Naturstyrelsen
Storstrøm
- Geocenter Møns Klint
- Ravn-Nature
- Eurosite (European
Land Conservation
Network)
- ELO (European
Landowners
Organisation)

Co-financers:

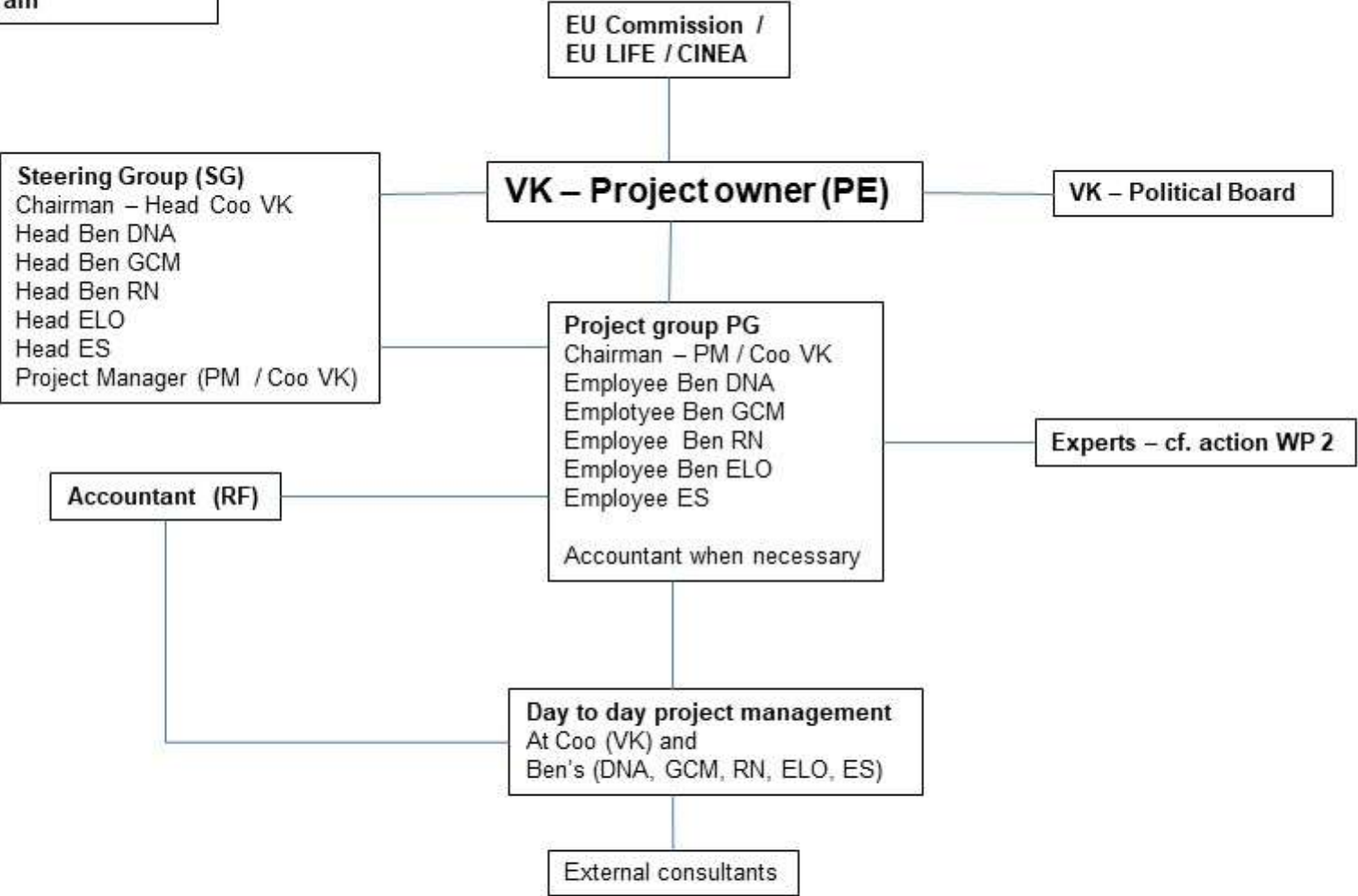
- Aage V. Jensen Naturfond
- 15. Juni Fonden
- (Den Danske Naturfond)

Samlet budget: Ca. 40. mio dkr

Medfinansiering fra EU: 67%

- Aage V. Jensen Naturfond +
15. Juni Fonden = 7,5 mio kr.
- Den Danske Naturfond =
1 mio. dkr.

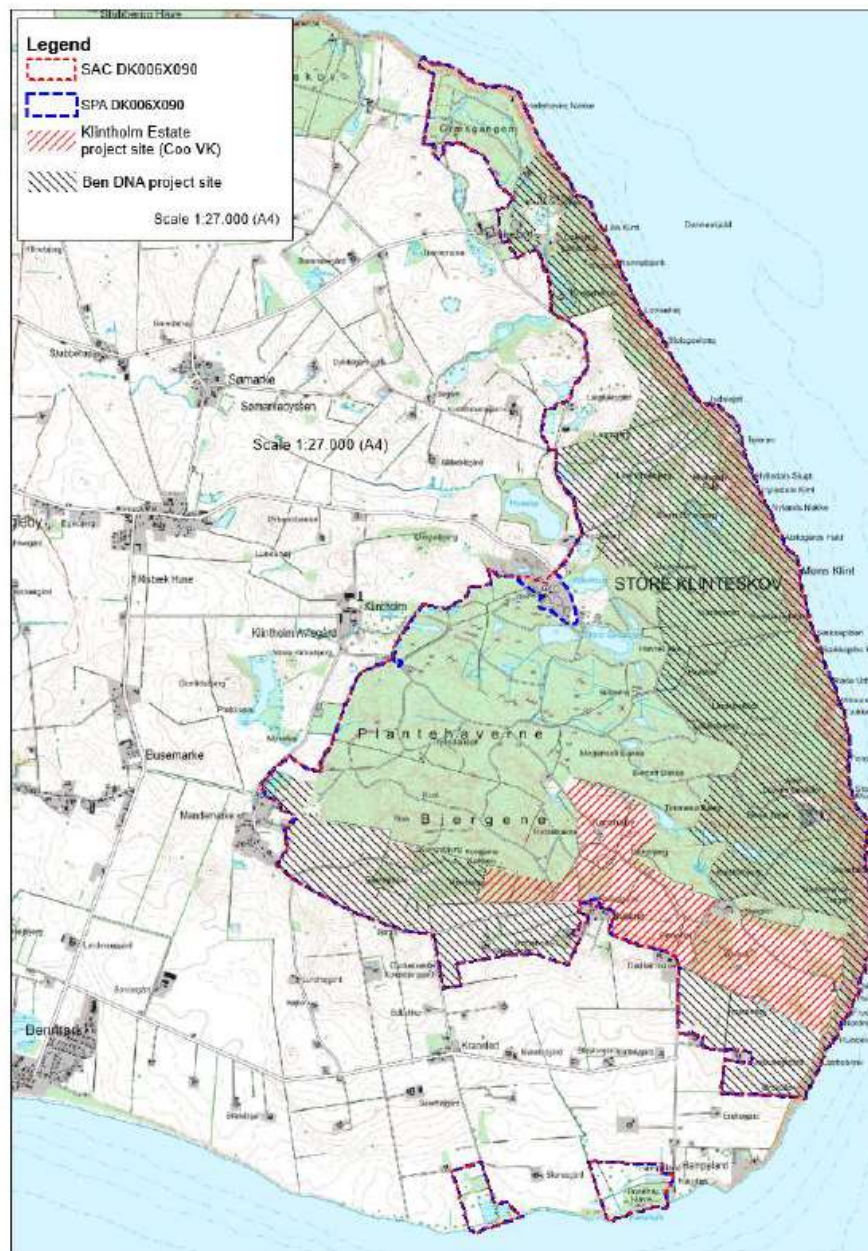
WP 1
Vordingborg Municipality
Project Management
Organigram

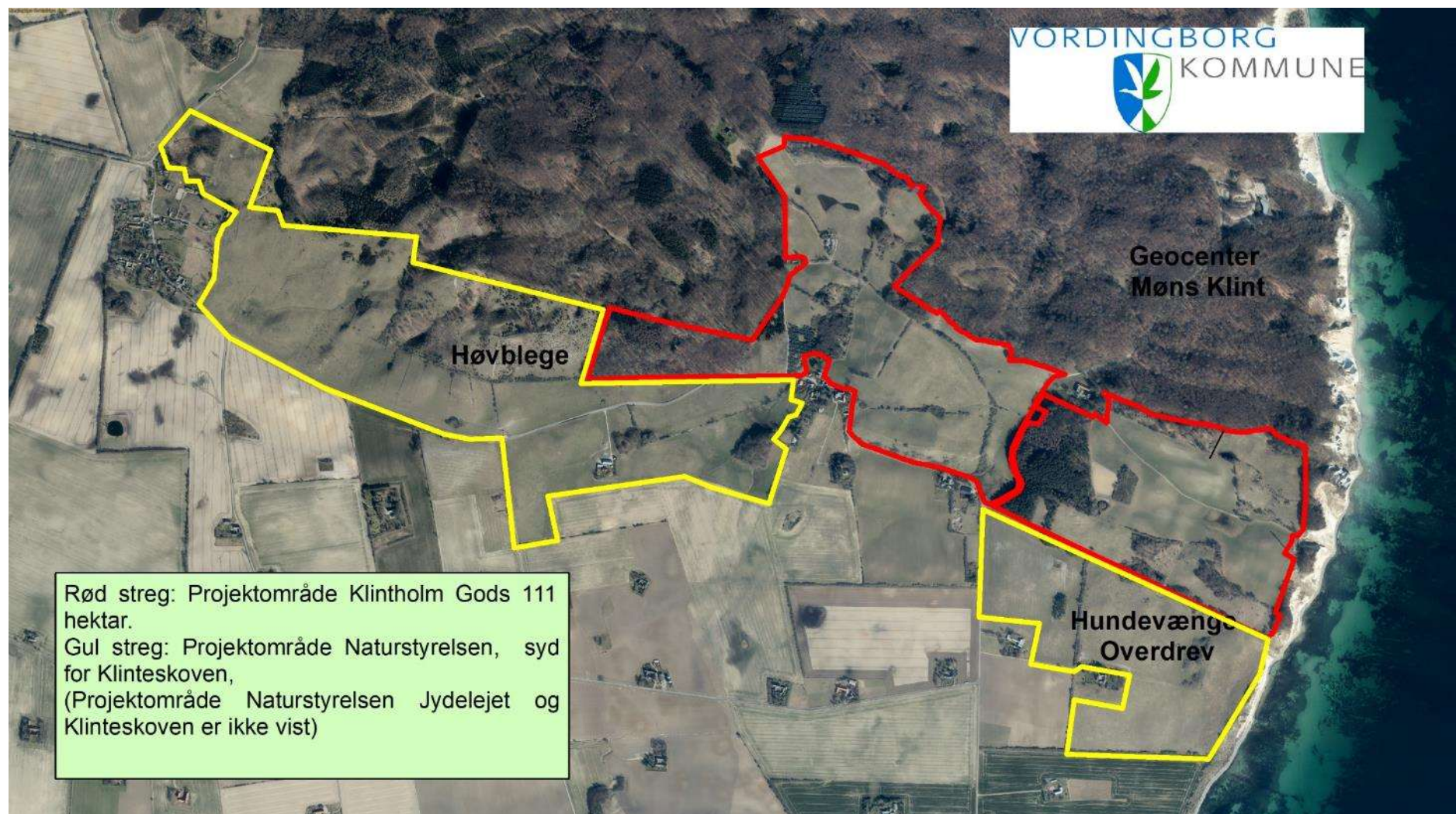


Abbreviations

Coo: Coordinator, Ben: Partners

VK: Vordingborg Municipality, DNA: Danish Nature Agency, GCM: GeoCenter Møns Klint, RN: Ravn-Nature ApS, ELO: European Landowner Organisation, ES: Eurosite







THE KEY PROBLEM: EU PRIORITY DRY GRASSLANDS, FORESTS (6210*, 6120*, 6230*, 9150, 9130) AND THE BUTTERFLY SPECIES *PHENGARIS ARION* ARE IN AN UNFAVORABLE / BAD CONSERVATION STATUS IN DENMARK

Article 17 data (2019) - NAP (Natura 2000 Plan)

IDENTIFIED THREATS TO TARGET HABITAT TYPES AND SPECIES:


SOCIETAL CONSERVATION HURDLES:

**DRY GRASSLANDS
(6210*, 6120*, 6230*)**


- 1.1 Reduction of habitat connectivity
- 1.2 Overgrowth leading to species composition change
- 1.3 Lack of appropriate grazing
- 1.4 Pollution from agricultural activities
- 1.5 Removal of landscape features
- 1.6 Modification of hydrology
- 1.7 IAS - Invasive alien species - outcompetes natural flora
- 1.8 Release of pheasants causes negative environmental change


Objective 1 Objective 2 Objective 3

WP3. Task 3.1
Landowner agreement, compensation and clause onland

WP4. Task 4.4 
Establishing grazing facilities

WP4. Task 4.2 
Improvement of existing dry grassland (6210*, 6120*)

WP4. Task 4.1 
Develop new dry grassland (6210*, 6120*)

WP4. Task 4.3 
Establishing natural hydrology

**FORESTS
(9150, 9130)**

- 2.1 Conversion to other types of forests, clear-cuttings and lack of dead wood.
- 2.2 Mixed source pollution

Objective 4 Objective 5


WP3. Task 3.1
Landowner agreement, compensation and clause on forest as untouched


WP4. Task 4.5
Veteranization of trees, securing light and dead wood on the forest floor

SPECIES (*PHENGARIS ARION* AND FIVE RED LIST ORCHIDS)

- 3.1 Release of game / pheasants causes reduction of *Phengaris arion* and wild pollinator populations
- 3.2 Reduced fecundity / genetic depression at *Phengaris arion*
- 3.3 Mixed source pollution leading to degradation of *Phengaris arion* habitats
- 3.4 Lack of appropriate grazing
- 3.5 Overgrowth leading to decline in Red List orchid populations


Objective 6 Objective 7 Objective 8


WP4. Task 4.3 
Establishing natural hydrology

WP4. Task 4.2 
Improvement of existing dry grassland

WP4. Task 4.6
Supplementary Breeding Program for *Phengaris arion*

WP4. Task 4.1 
Develop new dry grassland (6210*)

WP4. Task 4.4 
Establishing grazing facilities

WP4. Task 4.7 
Spot management for five Red List orchids

LACK OF KNOWHOW, INCENTIVES AND AWARENESS

- 4.1 Lack of know-how on nature-management and restoration
- 4.2 Private landowners lack of awareness and incentives for nature-friendly land use.
- 4.3 Public lack of knowledge about importance of nature conservation in Natura 2000 network in Denmark.


Objective 9 Objective 10 Objective 11

WP5. Task 5.1
Increase practical know-how on management and restoration - professional stakeholders

WP5. Task 5.2
Boost awareness and incentives for nature-friendly land-use for private landowners

WP5 Task 5.3
Increased public knowledge of Natura 2000 network

Monitoring of impact WP7

 Tasks linked to replication activities.

| |
|--|
| Work package 1. Project management and coordination activities |
| T.1.1 Project management (Coo VK, all beneficiaries) |
| Work Package 2: Preparatory tasks |
| T.2.1 Archaeological, biological and technical surveys (Coo VK, Ben DNA, Ben Ben RN) |
| T.2.2 Tender procedures (Coo VK, Ben DNA, Ben RN) |
| T.2.3 Application for authorities (Coo VK, Ben DNA) |
| T.2.4 Expert Group (Coo VK, Ben DNA, Ben RN) |
| Work Package 3: Purchase / Land lease |
| T.3.1 Agreement on compensation and restrictions in land use at the Klintholm Estate site. (Coo VK) |
| T.3.2 Providing substitute land. (Coo VK) |
| Work Package 4: Conservation tasks |
| T.4.1. New 6210* and 6120* dry grassland (Coo VK, Ben DNA, Ben RN). |
| T.4.2 Improvement of exisiting dry grassland on 6210*, 6120*, 6230* (Coo VK, Ben DNA, Ben RN). |
| T.4.3 Establishing natural hydrology. (Coo VK, Ben DNA, Ben RN). |
| T.4.4. Establishment of grazing facilities. (Coo VK, Ben DNA, Ben RN). |
| T.4.5. Veteranization of trees (Coo VK, Ben RN). |
| T.4.6 Supplementary breeding program for <i>Phengaris arion</i> . (Coo VK). |
| T.4.7 Spot management for orchids (Ben DNA) |
| T.4.8 Supervision of construction work (Coo VK, BenDNA, BenRN) |
| WP 5 Addressing societal conservation hurdles |
| T.5.1 Increase practical know-how on management and restoration - professional stakeholders (Coo VK, Ben DNA, Ben RN, Ben ELO, Ben Eurosite) |
| T.5.2 Boost awareness and incentives for nature-friendly land use for private landowners by upscaling implementation of innovative business models (Ben ELO, Ben Eurosite, Coo VK) |
| T.5.3 Increased knowledge in the public about the importance of nature-conservation in Natura 2000 sites (Ben GCM) |
| Work Package 6: Sustainability, replication, dissemination, and exploitation of project results |
| T.6.1 Networking (Coo VK, Ben DNA, Ben RN. Ben ELO, Ben Eurosite) |
| T.6.2 Replicability and upscaling (Coo VK, Ben DNA, Ben RN) |
| T.6.3 Exploitation of project results and dissemination (Ben GCM, Coo VK, Ben DNA, Ben RN) |
| T.6.4 AfterLIFE Plan (Coo VK, Ben DNA) |
| Work Package 7: Monitoring and evaluation |
| T.7.1 Biological and physical monitoring (Coo VK, Ben DNA, Ben RN) |
| T.7.2 Ecosystem services and socio-economic impact (Coo VK, Ben DNA, Ben GCM) |

VISION – Genskabelse af "Enebærlandet" på Østmøn.

- Store sammenhængende biodiversitetsrige landskaber med naturlige processer og landskabsstrukturer!









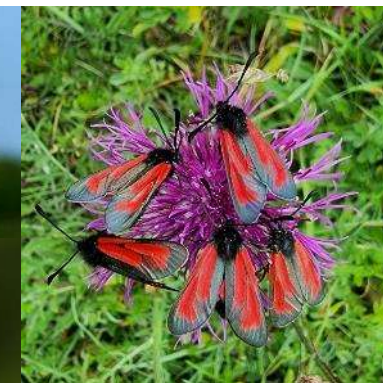










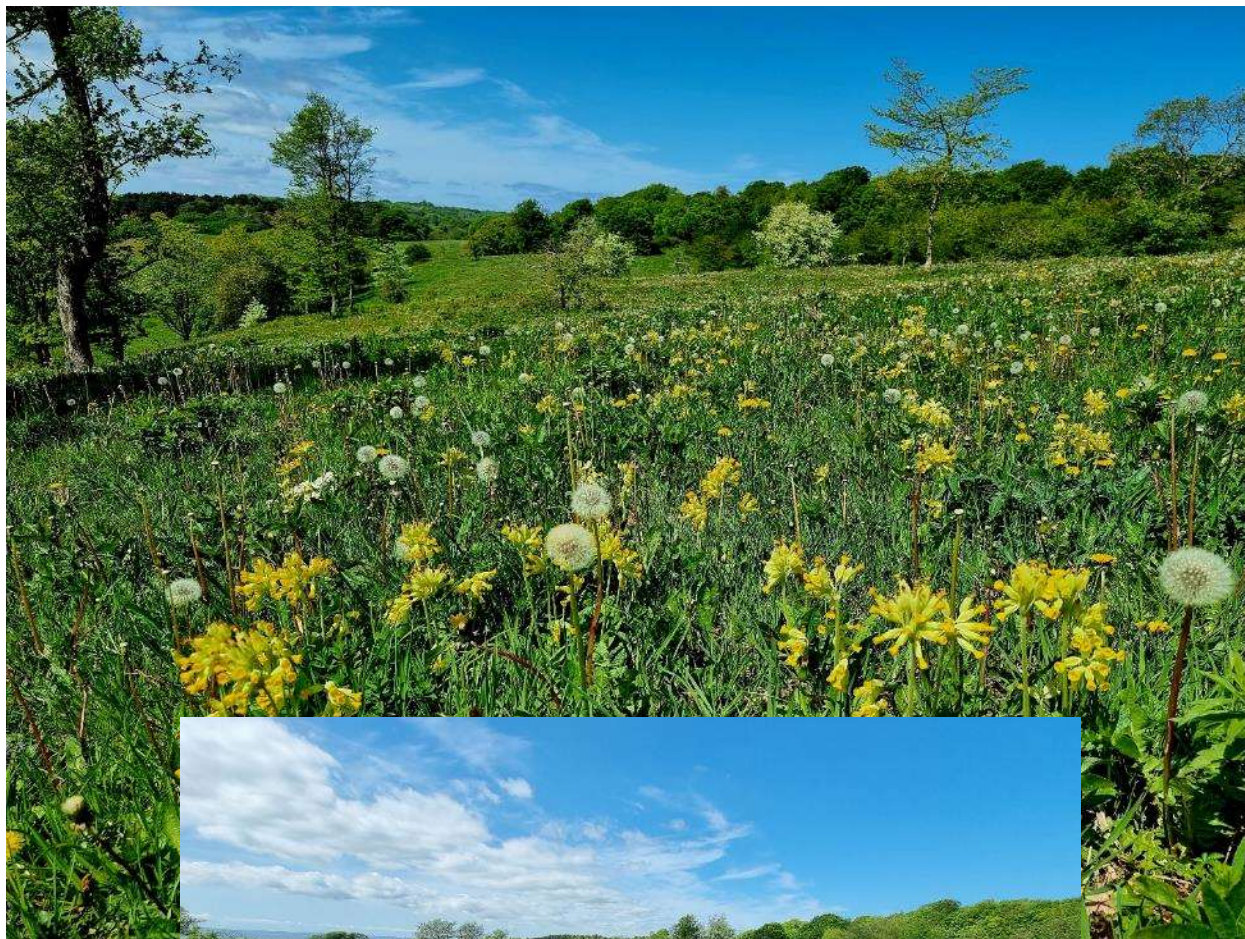




















Tak for ordet –
Vi glæder os til i samarbejde med alle at skabe Danmarks
Vildeste Overdrevs-projekt!

